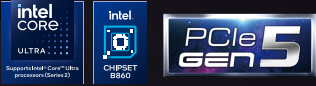
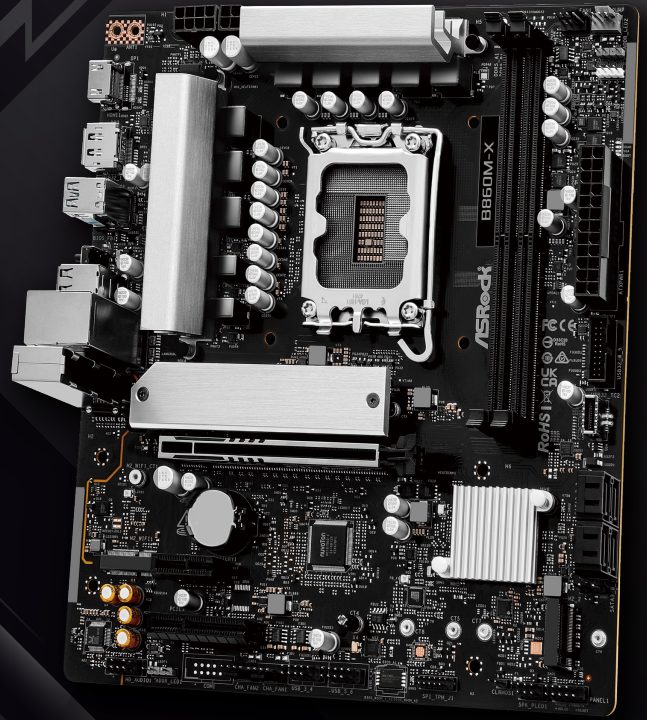


# B860M-X R2.0



## PRODUCT BRIEF :

- Supports Intel® Core™ Ultra Processors (Series 2) (LGA1851)
- 7+1+1+1 Power Phase
- 2 x DDR5 DIMMs
- Supports Dual Channel, up to 9066+ (OC)
- 1 PCIe 5.0 x16, 1 PCIe 4.0 x4, 1 PCIe 4.0 x1, 1 M.2 Key E for WiFi
- Graphics Output Options: 1 HDMI, 1 DisplayPort
- Realtek ALC897 7.1 CH HD Audio Codec
- 4 SATA3
- 1 Blazing M.2 (PCIe Gen5 x4)
- 1 Hyper M.2 (PCIe Gen4 x4)
- 1 USB 3.2 Gen2x2 Type-C (Rear)
- 1 USB 3.2 Gen1 Type-C (Front)
- 5 USB 3.2 Gen1 (3 Rear, 2 Front)
- 6 USB 2.0 (2 Rear, 4 Front)
- Realtek 2.5G LAN
- Supports BIOS Flashback



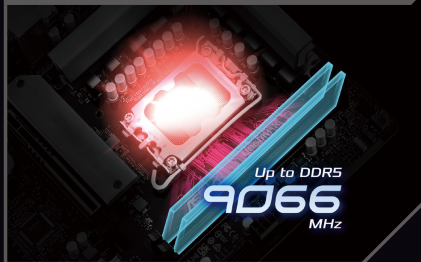
I/O OVERVIEW

### PCIe 5.0 Support

Supports PCIe 5.0 standard for both graphics card and M.2 SSD.



### Up to DDR5-9066 MHz



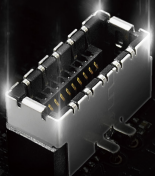
### USB 3.2 Gen2x2 Type-C

The USB 3.2 Gen2x2 Type-C delivers up to 20 Gbps data transfer rate.



### Front USB 3.2 Gen1 Type-C

USB 3.2 Gen1 Type-C that delivers up to 5Gbps data transfer rate.



### Polychrome RGB

The RGB LED header allows user to create unique PC style easily.



### M.2 (KEY E) For WiFi

Users may upgrade wireless module by M.2 (Key E) slot.



\*WiFi module is not included.



## Detail Specification

<b>Platform</b>	- Micro ATX Form Factor: 9.6-in x 8.6-in, 24.4 cm x 21.8 cm	<b>Rear Panel I/O</b>	- 2 x Antenna Mounting Points - 1 x HDMI Port - 1 x DisplayPort 1.4 - 1 x USB 3.2 Gen2x2 Type-C Port (20 Gb/s) - 3 x USB 3.2 Gen1 Ports - 2 x USB 2.0 Ports - 1 x RJ-45 LAN Port - 1 x BIOS Flashback Button - HD Audio Jacks: Line in / Front Speaker / Microphone
<b>Unique Feature</b>	<p>Superb Productivity</p> <ul style="list-style-type: none"> <li>- PCIe Gen5 (Graphics, M.2)</li> <li>- Dual Channel DDR5</li> </ul> <p>Rock-Solid Durability</p> <ul style="list-style-type: none"> <li>- 7+1+1+1+1 Power Phase</li> </ul> <p>Ultrafast Connectivity</p> <ul style="list-style-type: none"> <li>- 2.5G LAN</li> </ul> <p>EZ Update</p> <ul style="list-style-type: none"> <li>- BIOS Flashback Button</li> <li>- ASRock Auto Driver Installer</li> </ul> <p>EZ Troubleshooter</p> <ul style="list-style-type: none"> <li>- ASRock Post Status Checker</li> </ul>	<b>Storage</b>	<p>CPU:</p> <ul style="list-style-type: none"> <li>- 1 x Blazing M.2 Socket (M2_1, Key M), supports type 2260/2280 PCIe Gen5x4 (128 Gb/s) mode*</li> </ul> <p>Chipset:</p> <ul style="list-style-type: none"> <li>- 1 x Hyper M.2 Socket (M2_2, Key M), supports type 2230/2242/2260/2280 PCIe Gen4x4 (64 Gb/s) mode*</li> <li>- 4 x SATA3 6.0 Gb/s Connectors</li> </ul> <p>* Supports Intel® Volume Management Device (VMD) * Supports NVMe SSD as boot disks</p>
<b>CPU</b>	- Supports Intel® Core™ Ultra Processors (Series 2) (LGA1851) - Supports Intel® Hybrid Technology - Supports Intel® Turbo Boost Max 3.0 Technology - Supports Intel® Thermal Velocity Boost (TVB) - Supports Intel® Adaptive Boost Technology (ABT) - Integrated NPU for dedicated AI acceleration	<b>RAID</b>	- Supports RAID 0, RAID 1, RAID 5 and RAID 10 for SATA storage devices
<b>Chipset</b>	- Intel® B860	<b>Connector</b>	<ul style="list-style-type: none"> <li>- 1 x SPI TPM Header</li> <li>- 1 x Power LED and Speaker Header</li> <li>- 1 x RGB LED Header*</li> <li>- 2 x Addressable LED Headers**</li> <li>- 2 x CPU Fan Connector (4-pin) (Smart Fan Speed Control)***</li> <li>- 2 x Chassis Fan Connectors (4-pin) (Smart Fan Speed Control)***</li> <li>- 1 x AIO Pump Fan Connector (4-pin) (Smart Fan Speed Control)***</li> <li>- 1 x 24 pin ATX Power Connector</li> <li>- 1 x 8 pin 12V Power Connector (Hi-Density Power Connector)</li> <li>- 1 x 4 pin 12V Power Connector (Hi-Density Power Connector)</li> <li>- 1 x Front Panel Audio Connector</li> <li>- 2 x USB 2.0 Headers (Support 4 USB 2.0 ports)</li> <li>- 1 x USB 3.2 Gen1 Header (Supports 2 USB 3.2 Gen1 ports)</li> <li>- 1 x Front Panel Type C USB 3.2 Gen1 Header</li> </ul> <p>* Supports in total up to 12V/3A, 36W LED Strip ** Support in total up to 5V/3A, 15W LED Strip *** CPU_FAN1 supports the fan power up to 1A (12W). *** CPU_FAN2, CHA_FAN1~2 and AIO_PUMP support the fan power up to 3A (36W). *** CPU_FAN2, CHA_FAN1~2 and AIO_PUMP can auto detect if 3-pin or 4-pin fan is in use.</p>
<b>Memory</b>	<ul style="list-style-type: none"> <li>- Dual Channel DDR5 Memory Technology</li> <li>- 2 x DDR5 DIMM Slots</li> <li>- Supports DDR5 non-ECC, un-buffered memory up to 9066+(OC)* 1DPC 1R Up to 9066+ MHz (OC), 6400 MHz Natively. 1DPC 2R Up to 6800+ MHz (OC), 6400 MHz Natively.</li> <li>- Supports Clocked Unbuffered DIMM (CUDIMM)</li> <li>- Max. capacity of system memory: 128GB</li> <li>- Supports Intel® Extreme Memory Profile (XMP) 3.0x</li> </ul> <p>* Please refer to Memory Support List on ASRock's website for more information. (<a href="http://www.asrock.com/">http://www.asrock.com/</a>)</p>	<b>BIOS Feature</b>	- 256Mb AMI UEFI Legal BIOS with GUI support
<b>Expansion Slot</b>	<p>CPU:</p> <ul style="list-style-type: none"> <li>- 1 x PCIe 5.0 x16 Slot (PCIe1), supports x16 mode*</li> </ul> <p>Chipset:</p> <ul style="list-style-type: none"> <li>- 1 x PCIe 4.0 x1 Slot (PCIe2)*</li> <li>- 1 x PCIe 4.0 x4 Slot (PCIe3), supports x4 mode*</li> <li>- 1 x M.2 Socket (Key E), supports type 2230 WiFi/BT PCIe WiFi module and Intel® CNVio/CNVio2 (Integrated WiFi/BT)</li> </ul> <p>* Supports NVMe SSD as boot disks</p>	<b>Software and UEFI</b>	<p>Software</p> <ul style="list-style-type: none"> <li>- ASRock Motherboard Utility (A-Tuning)</li> <li>- ASRock Dragon 2.5G LAN Software</li> <li>- ASRock Polychrome SYNC</li> </ul> <p>* These utilities can be downloaded from ASRock Live Update &amp; APP Shop.</p> <p>UEFI</p> <ul style="list-style-type: none"> <li>- ASRock EZ Mode</li> <li>- ASRock Full HD UEFI</li> <li>- ASRock My Favorites in UEFI</li> <li>- ASRock Auto Driver Installer</li> <li>- ASRock Instant Flash</li> </ul>
<b>Graphics</b>	<p>* Intel® UHD Graphics Built-in Visuals and the VGA outputs can be supported only with processors which are GPU integrated.</p> <ul style="list-style-type: none"> <li>- Intel® X® LPG Graphics Architecture</li> <li>- 1 x HDMI 2.1 TMDS/FRL 8G Compatible, supports HDR, HDCP 2.3 and max. resolution up to 4K 120Hz</li> <li>- 1 x DisplayPort 1.4 with DSC (compressed), supports HDCP 2.3 and max. resolution up to 8K 60Hz / 5K 120Hz</li> </ul>	<b>OS</b>	- Microsoft® Windows® 11 64-bit
<b>Audio</b>	- 7.1 CH HD Audio (Realtek ALC897 Audio Codec)	<b>Certifications</b>	- FCC, CE - ErP/EuP ready (ErP/EuP ready power supply is required)
<b>LAN</b>	<ul style="list-style-type: none"> <li>- 2.5 Gigabit LAN 10/100/1000/2500 Mb/s</li> <li>- Dragon RTL8125BG</li> <li>- Supports Dragon 2.5G LAN Software <ul style="list-style-type: none"> <li>- Smart Auto Adjust Bandwidth Control</li> <li>- Visual User Friendly UI</li> <li>- Visual Network Usage Statistics</li> <li>- Optimized Default Setting for Game, Browser, and Streaming Modes</li> <li>- User Customized Priority Control</li> </ul> </li> </ul>	<b>Accessories</b>	<ul style="list-style-type: none"> <li>- 1 x I/O Shield</li> <li>- 2 x SATA Data Cables</li> <li>- 2 x Screws for M.2 Sockets</li> <li>- 1 x Standoff for M.2 Socket</li> </ul>
<b>USB</b>	<p>CPU:</p> <ul style="list-style-type: none"> <li>- 1 x USB 3.2 Gen2x2 Type-C (Rear)</li> </ul> <p>Chipset:</p> <ul style="list-style-type: none"> <li>- 1 x USB 3.2 Gen1 Type-C (Front)</li> <li>- 5 x USB 3.2 Gen1 Type-A (3 Rear, 2 Front)</li> <li>- 6 x USB 2.0 (2 Rear, 4 Front)</li> </ul> <p>* All USB ports support ESD Protection</p>		