

# PRODUCT DATA SHEET

Tt eSPORTS Product Development Department



## Level 20 **RGB**

# Titanium

## Cherry MX Gaming Keyboard



**CHERRY** 

MECHANICAL  
SWITCH

# Level 20 RGB Titanium GAMING KEYBOARD

Product Name : Level 20 RGB Titanium

Silver Switch Part NO : KB-LVT-SSSRUS-01

Product Position : Mechanical Gaming Keyboard

## KEYBOARD SPECIFICATION

Level 20 RGB Titanium | Mechanical Gaming Keyboard

<b>COLOR</b>	Titanium
<b>NO. OF MACRO KEYS</b>	NO
<b>NO. OF GAME PROFILES</b>	SIX
<b>GRAPHICAL UI</b>	YES
<b>WEIGHT</b>	1500 GRAMS
<b>GOLD-PLATED USB</b>	YES
<b>DIMENSION</b>	482 x 186 x 44 mm
<b>INTERFACE</b>	USB
<b>ANTI-GHOSTING KEYS</b>	YES / N KEY Rollover (USB)
<b>ON-BOARD MEMORY SIZE</b>	4M bit
<b>POLLING RATE</b>	1000 HZ
<b>BACK-LIGHT</b>	16.8 Million RGB Colors
<b>WRIST REST</b>	NO
<b>AUDIO AND USB PASS-THROUGH</b>	YES
<b>MULTIMEDIA KEYS</b>	5 + Volume Wheel
<b>BRAIDED CABLE</b>	YES
<b>CABLE LENGTH</b>	1.8 M

# Level 20 RGB Titanium GAMING KEYBOARD

Product Name : Level 20 RGB Titanium

Silver Switch Part NO : KB-LVT-SSSRUS-01

Product Position : Mechanical Gaming Keyboard

## HIGHLIGHT FEATURES

Level 20 RGB Titanium | Mechanical Gaming Keyboard

<b>SWITCH TYPE</b>	Mechanical
<b>SWITCH NAME</b>	CHERRY MX SPEED RGB SILVER MECHANICAL
<b>ACTUATION POINT</b>	SPEED RGB SILVER : 1.2 ± 0.4 MM
<b>KEY STROKE</b>	SPEED RGB SILVER : 3.4 - 0.4 MM
<b>ACTUATION FORCE</b>	45g(SILVER) with Optimized Tactile Feel
<b>KEY LIFESPAN</b>	50 Million Clicks Lifetime



CHERRY MX  
SPEED  
RGB SILVER  
ULTRA FAST 1.2MM  
ACTUATION POINT

# Level 20 RGB Titanium GAMING KEYBOARD

Product Name : Level 20 RGB Titanium

Silver Switch Part NO : KB-LVT-SSSRUS-01

Product Position : Mechanical Gaming Keyboard

## FEATURES

Level 20 RGB Titanium | Mechanical Gaming Keyboard

- TT RGB PLUS compatible with Thermaltake Power & Liquid Cooling compatible products.
- Premium grade aluminum faceplate construction with floating keycap design.
- Cherry MX RGB switches rated at 50-million keystrokes for the most durable, precise, and responsive tactile feedback.
- 16.8 million RGB color illumination across 2 separate zones.
- 13 dynamic lighting effects (front side) | 14 dynamic lighting effects from (side face).
- Lighting effect adjustment keys for brightness, speed, direction and zones.
- 5 pre-configured lighting zones FPS1, FPS2, MMO, MOBA and RTS.
- Conveniently placed Audio and USB pass-through.
- Dedicated multimedia & volume/mute keys.
- On-the-fly macro recording.
- 100% anti-ghosting support across all zones (N-Key Rollover).
- Full keyboard & disable windows lock function for unintentional command and easy cleaning.
- Available in 2 colors: Titanium & Black.

# Level 20 RGB Titanium GAMING KEYBOARD

Product Name : Level 20 RGB Titanium

Silver Switch Part NO : KB-LVT-SSSRUS-01

Product Position : Mechanical Gaming Keyboard

## KEYBOARD LAYOUT

Level 20 RGB Titanium | Mechanical Gaming Keyboard



- |                                     |                                   |
|-------------------------------------|-----------------------------------|
| a. Reset Key                        | h. Lighting Recording Key         |
| b. Windows Shortcut Keys            | i. WASD & Arrow Switch Key        |
| c. Lighting Effect Keys             | j. Profile Switch Key             |
| d. Lighting Effect Speed Keys       | k. Lighting Effect Direction Keys |
| e. Lighting Colors Control Keys     | l. Full Keyboard Lock Key         |
| f. Macro Recording Key              | m. Lighting Area Switch Key       |
| g. Default Zone Backlight Mode Keys |                                   |

# Level 20 RGB Titanium GAMING KEYBOARD

Product Name : Level 20 RGB Titanium

Silver Switch Part NO : KB-LVT-SSSRUS-01

Product Position : Mechanical Gaming Keyboard

## KEYBOARD HOTKEYS

Level 20 RGB Titanium | Mechanical Gaming Keyboard



- Fn + Esc – Reset Setting
- Fn + F1 – Email
- Fn + F2 – Web / Home
- Fn + F3 – My Computer
- Fn + F4 – Calculator
- Fn + F5 – Multimedia
- Fn + F6 – Lighting Effect Key
- Fn + F7 – Backlight Speed Down
- Fn + F8 – Backlight Speed Up
- Fn + F9 – Red Backlight Brightness Control
- Fn + F10 – Green Backlight Brightness Control
- Fn + F11 – Blue Backlight Brightness Control
- Fn + F12 – Lighting Effect Color Control
- Fn + W – Switch WASD / Arrow Keys
- Fn + PrcScr – Macro Recording
- Fn + ScLk – Pre Configured Lighting Zones
- Fn + Pause – Lighting Recording
- Fn + Ins – Profile 1
- Fn + Home – Profile 2
- Fn + PgUp – Profile 3
- Fn + Del – Profile 4
- Fn + End – Profile 5
- Fn + PgDn – Profile 6
- Fn + ↑ / ↓ / ← / → – Lighting Effect Direction
- Fn + Backspace – Lighting Area Switch
- Fn + Num – Full Keyboard Lock

# Level 20 RGB Titanium GAMING KEYBOARD

Product Name : Level 20 RGB Titanium

Silver Switch Part NO : KB-LVT-SSSRUS-01

Product Position : Mechanical Gaming Keyboard

## HIGHLIGHT FEATURES

Level 20 RGB Titanium | Mechanical Gaming Keyboard



### Cherry MX Speed RGB SILVER Mechanical Switches

Cherry MX Speed RGB Silver switches have the simplest operation, moving straight up and down without any additional tactile feedback or loud clicking noise – we'll come to these more complicated switches later on.

- 40% faster than the CHERRY MX Standard switch.
- High-precision mechanical switch for extremely short reaction times and high switching frequencies.

# Level 20 RGB Titanium GAMING KEYBOARD

Product Name : Level 20 RGB Titanium

Silver Switch Part NO : KB-LVT-SSSRUS-01

Product Position : Mechanical Gaming Keyboard

## HIGHLIGHT FEATURES

Level 20 RGB Titanium | Mechanical Gaming Keyboard



### 16.8 Million RGB Color

Stunning 16.8 million RGB color illumination under keys provides the brightest visibility and eye-catching style for your gaming session. Take it a step further and choose between 13 different lighting effect settings from front side (Static 、Pulse 、Rainbow Wave 、Spiral Rainbow 、Spectrum Cycling 、Reactive 、Flow 、Ripple 、Raindrops 、Snake Marquee 、Flashing 、Sound Control and System Temperature) and 14 different lighting effect settings form side face (Static 、Pulse 、Rainbow Wave 、Spiral Rainbow 、Spectrum Cycling 、Reactive 、Flow 、Ribbon 、Scan 、Raindrops 、Marquee 、Flashing 、Sound Control and System Temperature) coupled with 5 individual levels of brightness and lighting speed.



# Level 20 RGB Titanium GAMING KEYBOARD

Product Name : Level 20 RGB Titanium

Silver Switch Part NO : KB-LVT-SSSRUS-01

Product Position : Mechanical Gaming Keyboard

## HIGHLIGHT FEATURES

Level 20 RGB Titanium | Mechanical Gaming Keyboard



### TT RGB Plus Compatible

Sync lighting effects with other Thermaltake RGB compatible products: Thermaltake iRGB Plus Power Supply, Riing Plus 12 / 14 / 20 RGB Radiator Fan, Pacific W4 Plus CPU Water Block, Pacific V-GTX 1080Ti Plus Transparent (ASUS ROG), Pacific V-GTX 1080Ti Plus Transparent (MSI GAMING X), Pacific PR22-D5 Plus, Pacific RL360 Plus RGB Radiator, Floe Riing RGB 360 TT Premium Edition, Floe Riing RGB 280 TT Premium Edition, Floe Riing RGB 240 TT Premium Edition, Pacific Lumi Plus LED Strip, Pure Plus 12 RGB Radiator Fan, Riing Trio 12 RGB Radiator Fan.

\* Requires at least one Thermaltake TT RGB PLUS product to work in conjunction with the Level 20 RGB.

\* Install TT RGB PLUS software only.

# Level 20 RGB Titanium GAMING KEYBOARD

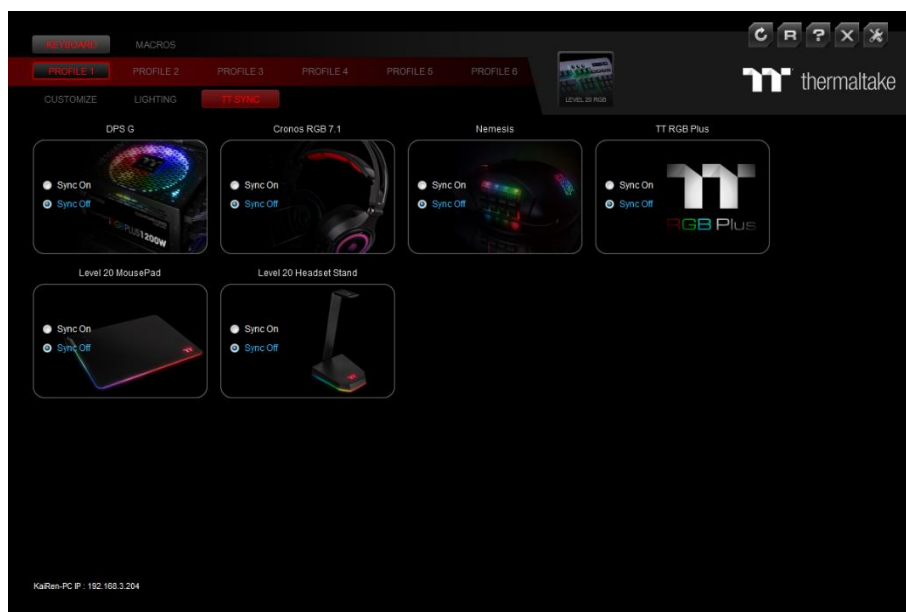
Product Name : Level 20 RGB Titanium

Silver Switch Part NO : KB-LVT-SSSRUS-01

Product Position : Mechanical Gaming Keyboard

## HIGHLIGHT FEATURES

Level 20 RGB Titanium | Mechanical Gaming Keyboard



### TT Sync Compatible

Sync lighting effects with other Thermaltake RGB compatible products:  
Thermaltake iRGB Plus Power Supply, Riing Plus 12 / 14 / 20 RGB Radiator Fan, Pacific W4 Plus CPU Water Block, Pacific V-GTX 1080Ti Plus Transparent (ASUS ROG), Pacific V-GTX 1080Ti Plus Transparent (MSI GAMING X), Pacific PR22-D5 Plus, Pacific RL360 Plus RGB Radiator, Floe Riing RGB 360 TT Premium Edition, Floe Riing RGB 280 TT Premium Edition, Floe Riing RGB 240 TT Premium Edition, Pacific Lumi Plus LED Strip, Pure Plus 12 RGB Radiator Fan, Riing Trio 12 RGB Radiator Fan.

\* Requires at least one Thermaltake TT RGB PLUS product to work in conjunction with the Level 20 RGB.

\* Install TT iTAKE Engine software only.

# Level 20 RGB Titanium GAMING KEYBOARD

Product Name : Level 20 RGB Titanium

Silver Switch Part NO : KB-LVT-SSSRUS-01

Product Position : Mechanical Gaming Keyboard

## HIGHLIGHT FEATURES

Level 20 RGB Titanium | Mechanical Gaming Keyboard



### Aluminum Faceplate Construction

With a splendid floating keycap design, coupled with individual key illumination design, the Level 20 RGB Titanium allows enthusiasts to not only challenge the game, but game in style as well.

# Level 20 RGB Titanium GAMING KEYBOARD

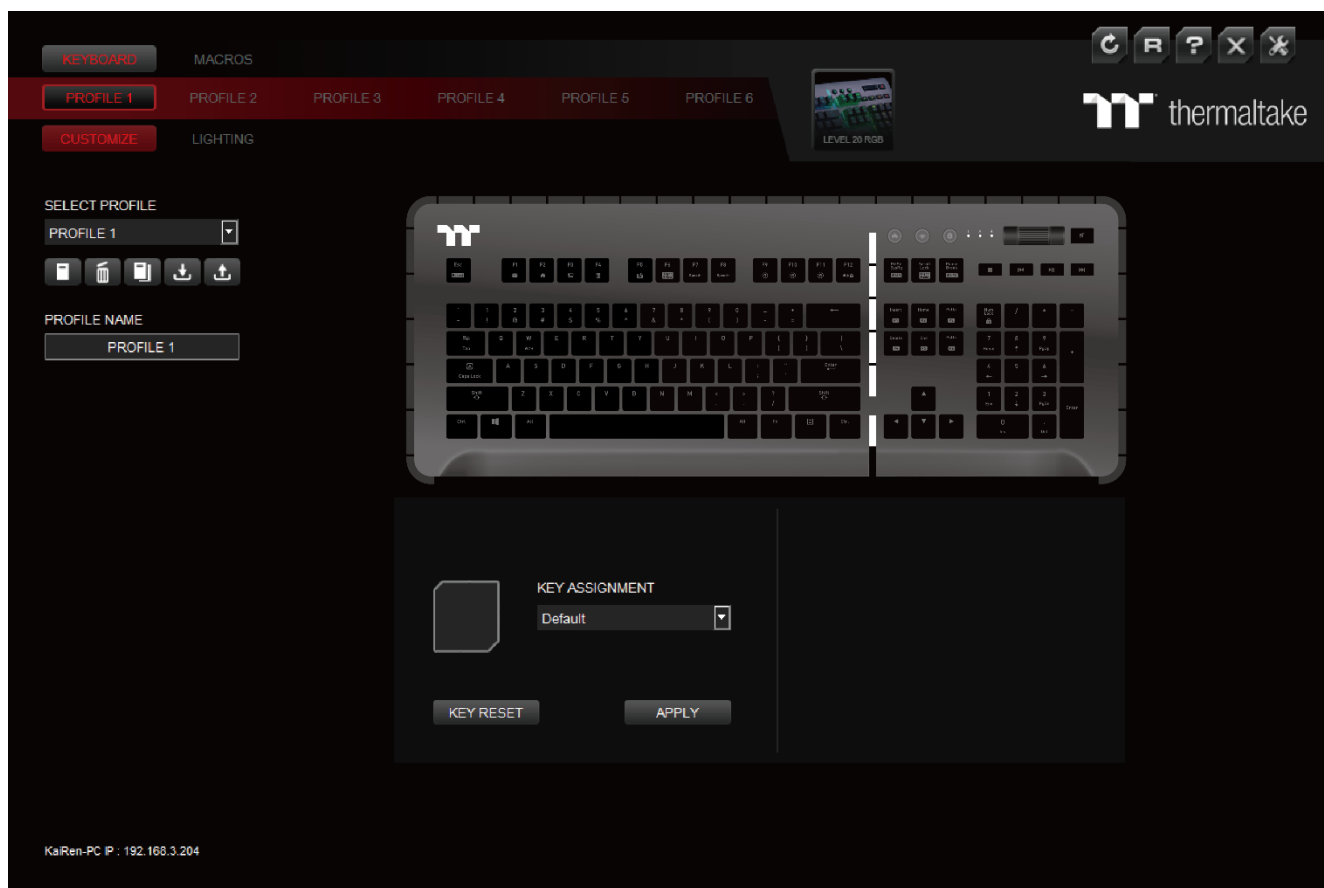
Product Name : Level 20 RGB Titanium

Silver Switch Part NO : KB-LVT-SSSRUS-01

Product Position : Mechanical Gaming Keyboard

## HIGHLIGHT FEATURES

Level 20 RGB Titanium | Mechanical Gaming Keyboard



### Macro & Profile Support

Customize with the TT iTAKE Engine software and take control of the most expansive set of macros and personalization options. Give yourself full control to program multiple keystrokes to a single key, change backlighting effects with intuitive keyboard commands or set with easy to quick launch custom game profiles.

# Level 20 RGB Titanium GAMING KEYBOARD

Product Name : Level 20 RGB Titanium

Silver Switch Part NO : KB-LVT-SSSRUS-01

Product Position : Mechanical Gaming Keyboard

## HIGHLIGHT FEATURES

Level 20 RGB Titanium | Mechanical Gaming Keyboard



### Dedicated Volume / Mute and Multimedia Controls

Control sound levels on-the-fly and access multimedia controls with ease using the conveniently placed dedicated controls.

# Level 20 RGB Titanium GAMING KEYBOARD

Product Name : Level 20 RGB Titanium

Silver Switch Part NO : KB-LVT-SSSRUS-01

Product Position : Mechanical Gaming Keyboard

## HIGHLIGHT FEATURES

Level 20 RGB Titanium | Mechanical Gaming Keyboard



### Game to Your Genre

Comes with 5 pre-configured game genre lighting zone illuminations: FPS1, FPS2, MMO, MOBA, RTS for that all important gaming advantage during gameplay. Furthermore, gamers can also customize their own unique custom lighting zones to effortlessly enhance their gaming experience in a way that is truly unique for them.

# Level 20 RGB Titanium GAMING KEYBOARD

Product Name : Level 20 RGB Titanium

Silver Switch Part NO : KB-LVT-SSSRUS-01

Product Position : Mechanical Gaming Keyboard

## HIGHLIGHT FEATURES

Level 20 RGB Titanium | Mechanical Gaming Keyboard

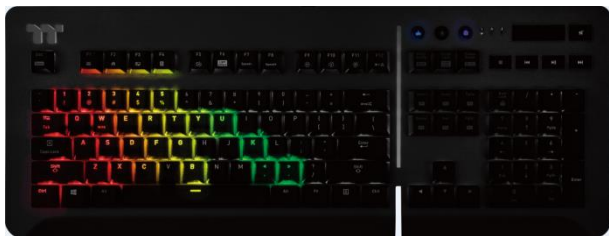
### FPS1-MODE



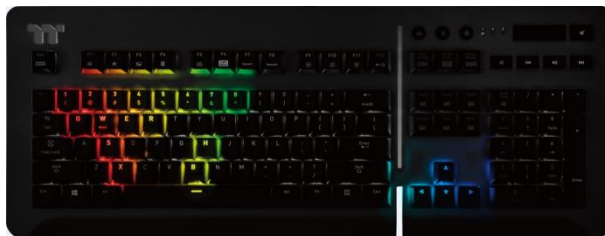
### MMO-MODE



### FPS2-MODE



### MOBA-MODE



### RTS-MODE



### Pre-Configured Lighting Zone

Game to your Genre the Level 20 RGB Titanium comes equipped with 5 pre-configured game genre lighting zone illuminations: RTS / FPS1 / FPS2 / MOBA / MMORPG for that all important gaming advantage during gameplay.

# Level 20 RGB Titanium GAMING KEYBOARD

Product Name : Level 20 RGB Titanium

Silver Switch Part NO : KB-LVT-SSSRUS-01

Product Position : Mechanical Gaming Keyboard

## HIGHLIGHT FEATURES

Level 20 RGB Titanium | Mechanical Gaming Keyboard



### Switch Windows Key to Ctrl Function

Switches windows key to Ctrl key to prevent accidental press of the windows key whilst in game.



# Level 20 RGB Titanium GAMING KEYBOARD

Product Name : Level 20 RGB Titanium

Silver Switch Part NO : KB-LVT-SSSRUS-01

Product Position : Mechanical Gaming Keyboard

## HIGHLIGHT FEATURES

Level 20 RGB Titanium | Mechanical Gaming Keyboard



### Fully Anti-Ghosting and USB N-KEY Rollover

USB N-Key rollover function allows the Level 20 RGB Titanium to hit a combination of keys at once to ensure your gaming session is as fluid as it can be, without obstacles!

# Level 20 RGB Titanium GAMING KEYBOARD

Product Name : Level 20 RGB Titanium

Silver Switch Part NO : KB-LVT-SSSRUS-01

Product Position : Mechanical Gaming Keyboard

## HIGHLIGHT FEATURES

Level 20 RGB Titanium | Mechanical Gaming Keyboard



### Convenient Audio & USB Pass-Through

Connect your compatible 3.5mm 4-pole audio and USB 2.0 device via the conveniently placed pass-through for easy insertion and removal, without having to reach behind your computer.

# Level 20 RGB Titanium GAMING KEYBOARD

Product Name : Level 20 RGB Titanium

Silver Switch Part NO : KB-LVT-SSSRUS-01

Product Position : Mechanical Gaming Keyboard

## HIGHLIGHT FEATURES

Level 20 RGB Titanium | Mechanical Gaming Keyboard



### Red Keycaps and Keycap Puller

11 additional red keycaps(1, 2, 3, 4, Q, W, E, R, A, S, D) and keycap puller included.

# Level 20 RGB Titanium GAMING KEYBOARD

Product Name : Level 20 RGB Titanium

Silver Switch Part NO : KB-LVT-SSSRUS-01

Product Position : Mechanical Gaming Keyboard

## HIGHLIGHT FEATURES

Level 20 RGB Titanium | Mechanical Gaming Keyboard



### WIN 10 READY

Windows XP, Vista, 7,  
8 and 10



### COMMAND ON THE FLY

Everything adjustable on-  
the -fly. Software not  
required.



### USB PORT

Requires a PC with an  
available USB port.

The Level 20 RGB Titanium utilizes a powerful onboard memory chipset and processor to power it's advanced on-the-fly system that enables users to control all essential functions right at their fingertips; and removes the need for any software switch, thus providing an easy to use and hassle free experience.

#### Functions include:

- LED lighting mode adjustment.
- Backlighting brightness / direction / speed / zones adjustment.
- Multimedia key shortcuts.
- Customized zone backlight recording.
- WASD / Arrow keys switchable.

# Level 20 RGB Titanium GAMING KEYBOARD

Product Name : Level 20 RGB Titanium

Silver Switch Part NO : KB-LVT-SSSRUS-01

Product Position : Mechanical Gaming Keyboard

## GALLERY

Level 20 RGB Titanium | Mechanical Gaming Keyboard

