

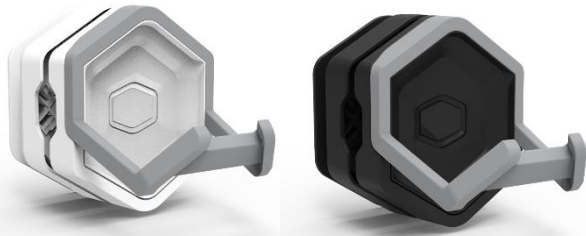


Make It Yours.

MASTERACCESSORY GEM

MCA-U000R-KPHK00/MCA-U000R-WPHK00

DON'T BE SQUARE



We've got your storage needs covered.

Turn any case into your own personal gaming storage system with the Gem! Magnetized for sturdy mounting, this accessory is made to store game pads, headsets and even VR headsets in style. Utilizing a unique SandwichTech design, Gem can also be attached to a wide variety of non-magnetic materials on PC cases.

Built-in cable ducts allow effortless cable management, locking cables in place for tidiness and ease of charging. Rubber-coated steel arms provides reliable support while ensuring your gaming gear stays protected from scratches at all times.

FEATURES

Multi-Surface Mounting –

Powerful Magnetic Hold:

Utilizing high strength magnets* and padded with non-slip material for extra security, Gem can be magnetized on surfaces to hold up to 2kgs, as well as larger, heavier devices such as VR headsets.

****For your data integrity, please keep 2cm (0.78inches) away from 3.5" HDDs.***

SandwichTech Multi-Surface Mounting: By implementing a unique sandwich structure design, Gem can be mounted onto a variety of non-magnetic surfaces on PC cases, including glass, acrylic, plastic and aluminum up to 4mm in thickness. SandwichTech can also be used to reinforce the magnetic strength on specialized materials such as mesh.

Multi-Purpose –

Wide Peripheral Compatibility: Gem is made to hold a wide variety of peripherals, including game pads, headsets, VR headsets, mobile phone...etc.

Easy Cable Management: Keep your setup clutter-free with the built-in cable routing ducts designed to allow charging while keeping cables locked in place.

Rubberized Protective Arms –

Heavy duty steel arms provide reliable support for peripherals up to 2kg. All points of contact are rubberized to protect your prized peripherals from scratches and reduce noise.

3D Printable, Limitless Customization –

Split Gem apart by removing a single screw, and customize Gem via 3D printing! From microphone mounts to camera mounts, and even beer openers, Gem can be modified for any purpose imaginable.

SPECIFICATIONS & PACKING INFORMATION

Product Name	MASTERACCESSORY GEM	MASTERACCESSORY GEM WHITE
Product Number	MCA-U000R-KPHK00	MCA-U000R-WPHK00
Available Color	Black / White	
Component Materials	Plastic, steel, silicone, magnet	
Dimensions (L x W x H)	91x84x115mm	
Compatibility	Universal game PAD, VR headset, headset, mobile phone, etc	
Support peripheral weight	Magnetized surface: up to 2.0kgs	
	SandwichTech structure: up to 1.5kgs	
Net Weight	240g	
Gross Weight	290g	
Warranty	2 year	
P/N	MCA-U000R-KPHK00	MCA-U000R-WPHK00
EAN code	4719512131985 6928968316794(CN)	4719512131992 6928968316800(CN)
UPC code	884102104305	884102104312
Units per carton box	30pcs	30pcs
Carton Net weight	7.10kg	7.10kg
Carton Gross weight	9.47kg	9.47kg
Retail Box dimension (LxWxH)	95x92x123mm	95x92x123mm
Carton dimension (L x W x H)	490x310x290mm	485x305x285mm

Cont.	W/ Pallet	Carton/ Pallet	W/O Pallet
20'	16800	56	N/A
40'	35280	56	N/A
40 HQ	40320	64	N/A



Make It Yours.

FEATURE HIGHLIGHTS



Multi-Purpose

Wide Peripheral Compatibility: Gem is made to hold a wide variety of peripherals, including game pads, headsets, VR headsets, mobile phone...etc.

Easy Cable Management: Keep your setup clutter-free with the built-in cable routing ducts designed to allow charging while keeping cables locked in place.

Rubberized Protective Arms

Heavy duty steel arms provide reliable support for peripherals up to 2kg. All points of contact are rubberized to protect your prized peripherals from scratches and reduce noise.



Multi-Surface Mounting

Powerful Magnetic Hold:

Utilizing high strength magnets* and padded with non-slip material for extra security, Gem can be magnetized on surfaces to hold up to 2kgs, as well as larger, heavier devices such as VR headsets.

****For your data integrity, please keep 2cm (0.78inches) away from 3.5" HDDs.***

SandwichTech Multi-Surface Mounting: By implementing a unique sandwich structure design, Gem can be mounted onto a variety of non-magnetic surfaces on PC cases, including glass, acrylic, plastic and aluminum up to 4mm in thickness. SandwichTech can also be used to reinforce the magnetic strength on specialized materials such as mesh.

	Magnetized	SandwichTech	Notes
Solid Steel Panels	2.0kg maximum load	N/A	--
Tempered Glass/Acrylic/Mesh	N/A	1.5kg maximum load	Recommended for surfaces no thicker than 4.0mm.