

- **Style: Simple**
- **Size: Mid Tower supports up to ATX MB**
- **Material: Steel & Tempered Glass**

Main Features

- **Connection: Front I/O ports with 2 x USB 3.0 & 1 x USB 3.2 (Gen 2) Type C**
- **Ventilation: Preinstalled 120mm ARGB fan x 3 and 120mm rear fan x 1**
- **Expansion: Support up to 7 x 2.5" SSD**
- **Support: Supports DIY liquid cooling solutions**



Specification

Model	Divider 500 TG ARGB	Divider 500 TG Snow ARGB
P/N	CA-1T4-00M1WN-01	CA-1T4-00M6WN-01
Case Type	Mid Tower	
Chassis Dimension (H*W*D)	530 x 230 x 466 mm (20.9 x 9.1 x 18.3 inch)	
Net Weight	10.6 kg / 23.4 lbs.	
Panel	3mm Tempered Glass x 4	
Color	Black	White
Material	SPCC	
Cooling System	Front(intake): 120 x 120 x 25 mm ARGB fan (1000rpm, 27.2 dBA) x 3 Rear(exhaust): 120 x 120 x 25 mm fan (1000rpm, 16 dBA) x 1	
Drive Bays	2 x 3.5", 5 x 2.5" or 7 x 2.5"	
Expansion Slots	7 (Rotatable Patented Design)	
Motherboards	6.7" x 6.7" (Mini ITX), 9.6" x 9.6" (Micro ATX), 12" x 9.6" (ATX)	
I/O Port	USB 3.2 (Gen 2) Type-C x 1, USB 3.0 x 2, HD Audio x 1	
PSU	Standard PS2 PSU (optional)	
Fan Support	Front: 3 x 120mm, 2 x 120mm, 1 x 120mm 3 x 140mm, 2 x 140mm, 1 x 140mm Top: 2 x 120mm, 1 x 120mm 2 x 140mm, 1 x 140mm Right (M/B Side): 2 x 120mm, 1 x 120mm Rear: 1 x 120mm	
Radiator Support	Front: 1 x 360mm, 1 x 240mm, 1 x 120mm 1 x 280mm, 1 x 140mm Top: 1 x 280mm, 1 x 140mm 1 x 240mm, 1 x 120mm Right (M/B Side): 1 x 240mm, 1 x 120mm Rear: 1 x 120mm	
Clearance	CPU cooler max height: 150mm VGA max length: 360mm (with radiator) 390mm (without radiator) PSU max length: 180mm (with HDD Cage) 220mm (without HDD Cage)	



Thermaltake Divider 500 TG ARGB Mid Tower Chassis

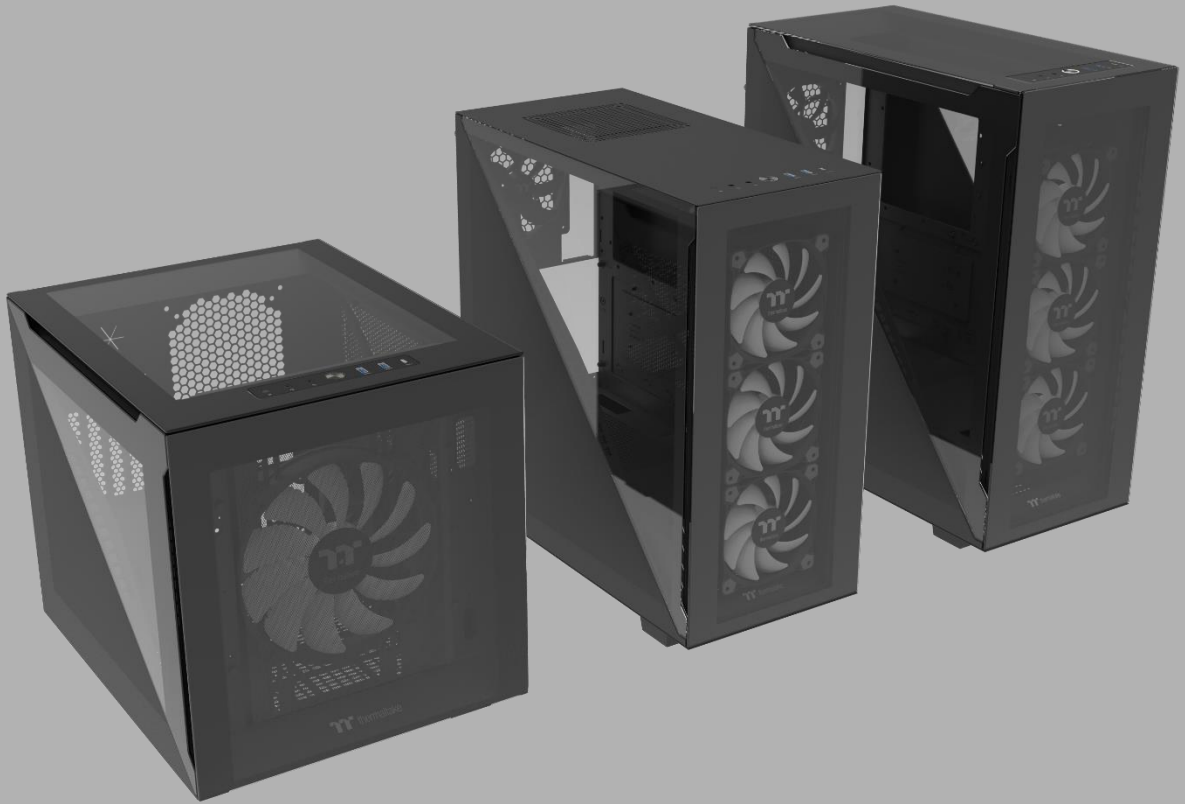
Packaging

Package Information	Divider 500 TG ARGB	Divider 500 TG Snow ARGB
EAN Code	4713227527880	4713227527897
UPC Code	841163077894	841163077900
N.W	10.6 kg / 23.4 lbs.	
G.W	14.37 kg / 31.7 lbs.	
Carton Size (L x W x H)	602 x 333 x 546.2 mm / 23.7 x 13.1 x 21.5 inch	
Cuft	3.87	
Container	w/o pallet	
20'	247 pcs	
40'	519 pcs	
40' HQ	595 pcs	





Thermaltake Divider 500 TG ARGB Mid Tower Chassis



The brand new ***Divider Series***



Thermaltake Divider 500 TG ARGB Mid Tower Chassis

Appearance –
Black version



Angle view



Left Side view



Front view



Right Side view



Internal Structure



Rear view



Top view



Bottom view



Thermaltake Divider 500 TG ARGB Mid Tower Chassis

Appearance –
Snow version



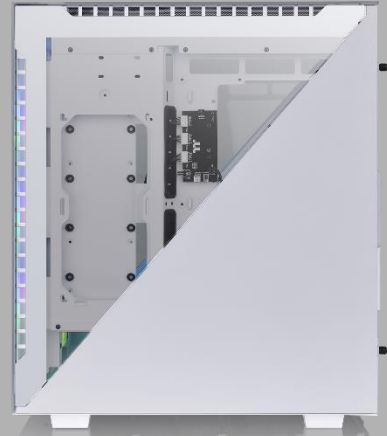
Angle view



Left Side view



Front view



Right Side view



Internal Structure



Rear view



Top view



Bottom view



Thermaltake Divider 500 TG ARGB Mid Tower Chassis

Clearance



Maximum support up to 120mm fan x 8

Maximum radiator support up to 360mm at front

Unique Design

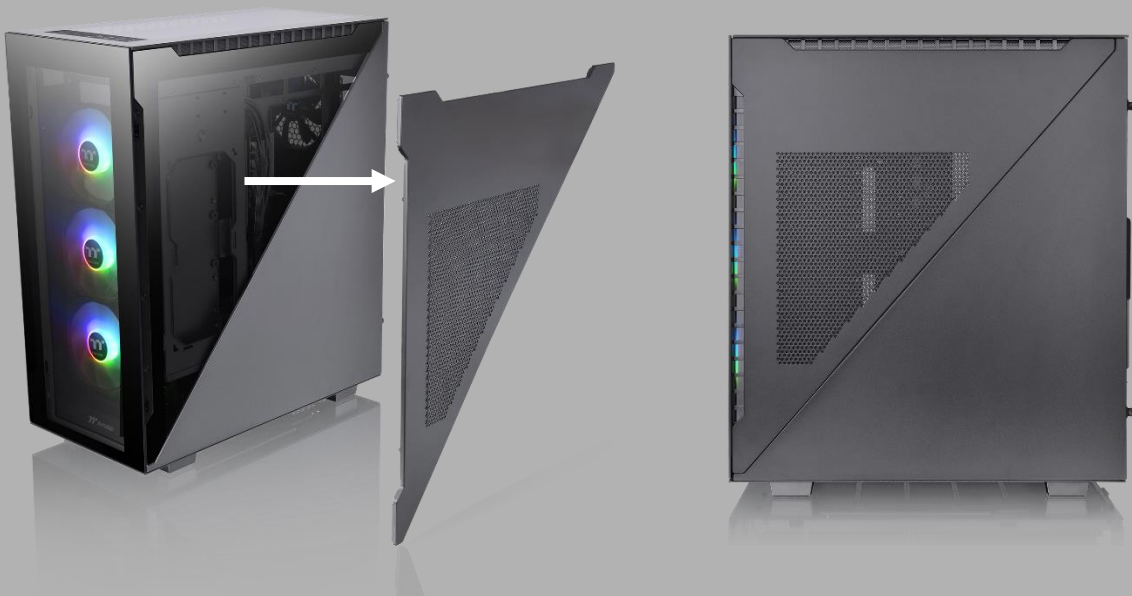


Unique Side Panel Design-
triangular Tempered
Glass/Steel side panels for
both left & right side

Unique Design



Extra triangular TG left side panels for the panoramic view



Extra triangular steel right side panel for better air flow if you install the radiator at the right side of the motherboard.



Thermaltake Divider 500 TG ARGB Mid Tower Chassis

Features



USB 3.2 (Gen 2) Type-C x 1

USB 3.0 x 2

HD Audio



Horizontal VGA
Bracket installation



Vertical VGA
Bracket installation

Rotational PCI-E slots
allows users to display
their graphics card
either horizontally or
vertically

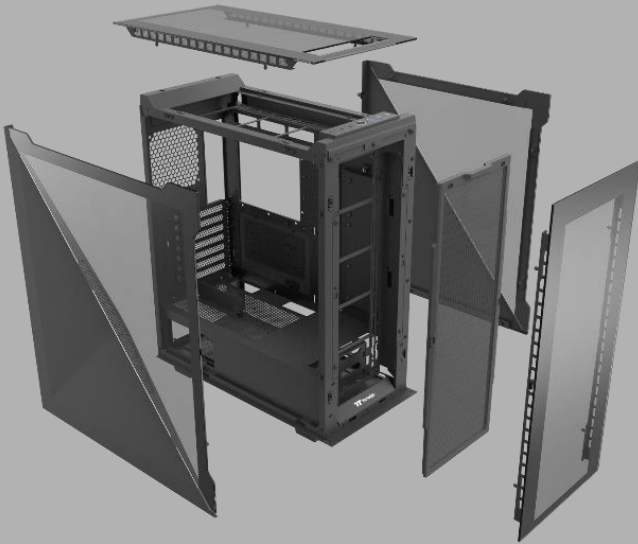


↑ VGA bracket in accessory box
supports vertically installation



Thermaltake Divider 500 TG ARGB Mid Tower Chassis

Structure (External)



Tool-free,
easy-to-remove
Panels design



The gap between
triangular TG and steel
panel is designed for
better air-flow



3mm tempered glass panels x 5
(front, left*2, right and top)



Thermaltake Divider 500 TG ARGB Mid Tower Chassis

Structure (Internal)



Removable front fan/radiator bracket for easier installation

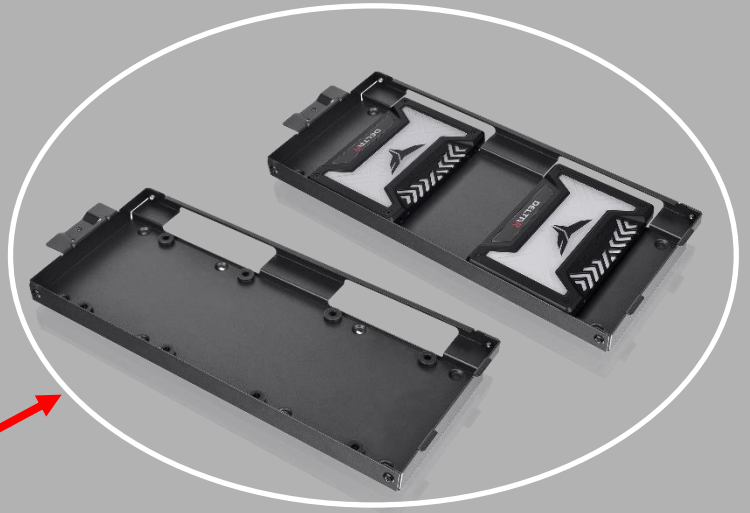
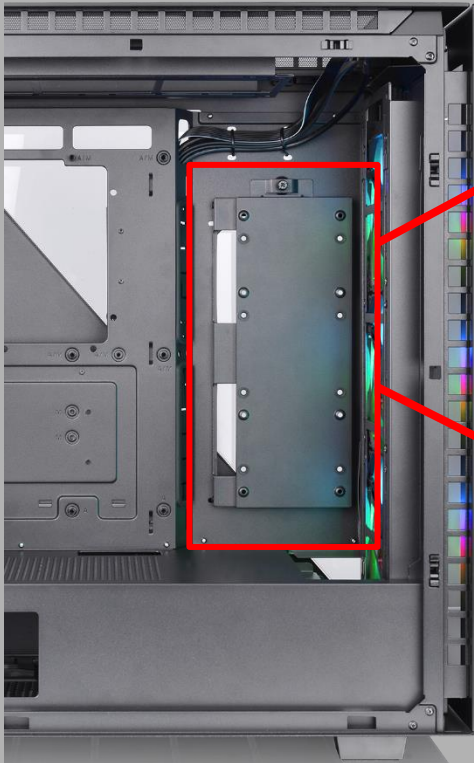


Preinstalled 120mm rear turbo fan

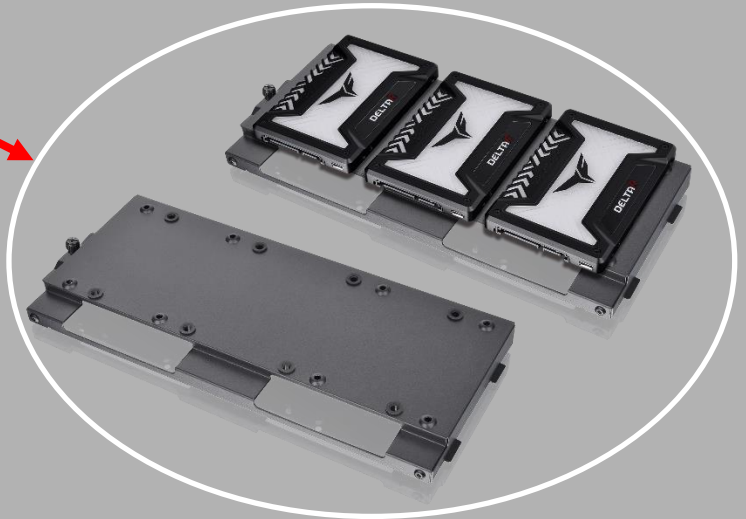


Thermaltake Divider 500 TG ARGB Mid Tower Chassis

Structure (Internal)



External side can supports
up to 2 x 2.5" SSD



Internal side can supports
up to 3 x 2.5" SSD



Full length power cover

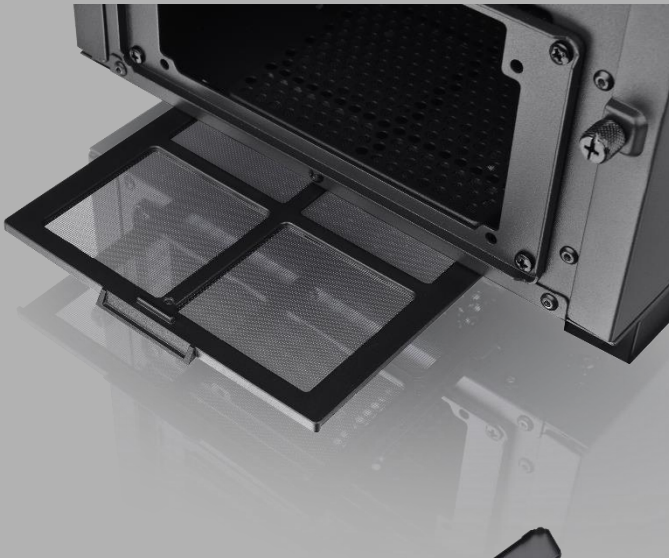


Thermaltake Divider 500 TG ARGB Mid Tower Chassis

Structure (Internal)



Front filter



Bottom filter



Right side filter



Thermaltake Divider 500 TG ARGB Mid Tower Chassis

Pre-installed
ARGB Fans



Pre-installed three hydraulic bearing 120mm ARGB front fans which can effectively lower the operation noise and enhance the thermal efficiency.



Divider 500 TG ARGB



Divider 500 TG Snow ARGB

SPEC for Case ARGB fans

- Fan Speed: 1000 +/- 10% RPM
- Fan Airflow: 45 CFM
- Fan Air Pressure: 0.82 mm-H2O
- Fan Noise Level: 27.2 dBA
- Fan Bearing: Hydraulic bearing

ARGB lighting Control Instruction



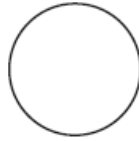
R



FAN



FAN



USB3.0



USB3.0



TYPE-C

Wave Mode Mode 1

Flow Mode Mode 2

RGB Lighting Mode 3 (Single Color)

Radar Mode Mode 4~10
(Red, Yellow, Green, Cyan, Blue, White, Purple)

Breath Mode Mode 11~18
(RGB, Red, Yellow, Green, Cyan, Blue, White, Purple)

Full Lighted Mode Mode 19

Single Color Mode 20~26
(Red, Yellow, Green, Cyan, Blue, White, Purple)

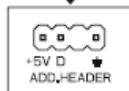
Light Off Mode 27

※ Long press on RGB button for 3 seconds, fan will blink twice which now are controlled by MB software. And vice versa.

How to connect MB

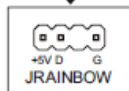
ASUS

Aura Addressable Strip Header(s)



MSI

JRGB-strip Header(s)



ASROCK

Addressable RGB LED Header(s)



GIGABYTE

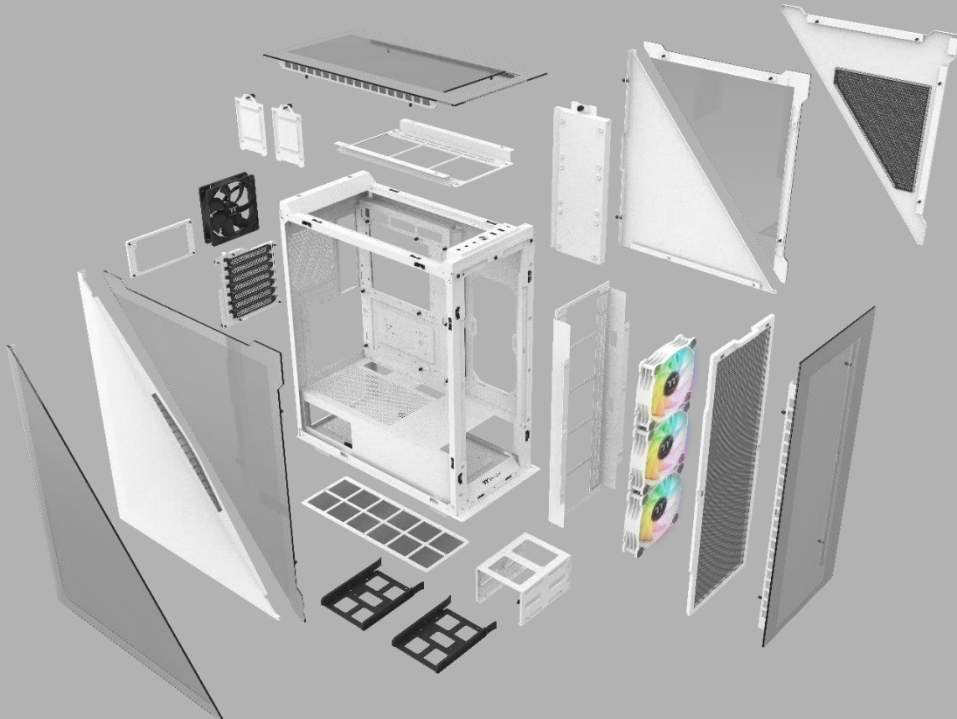
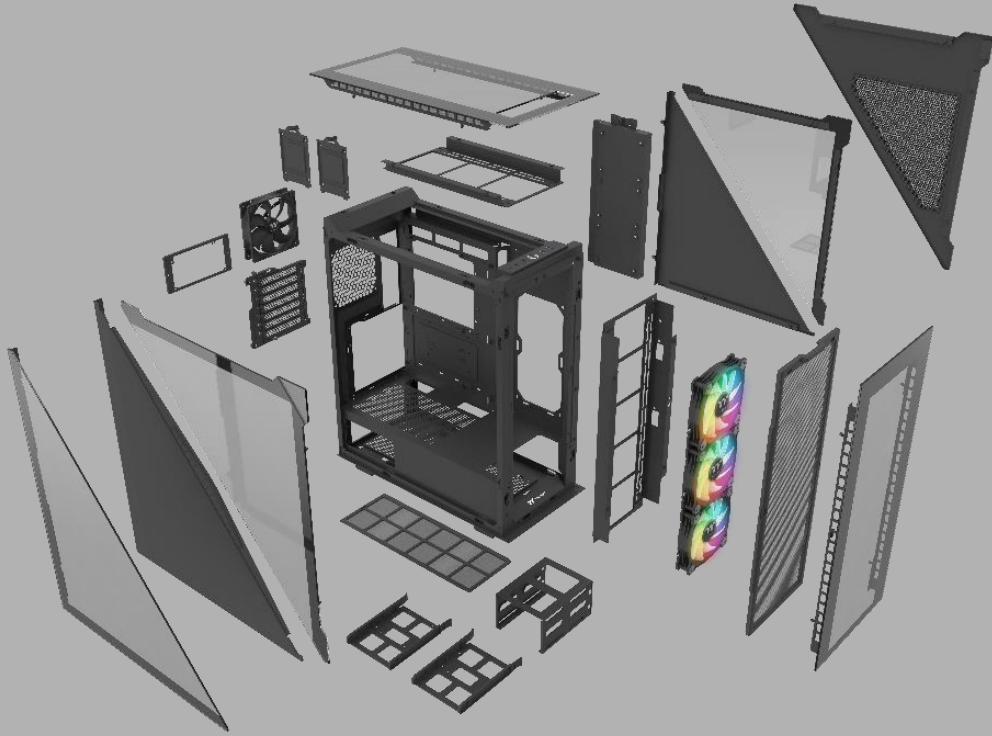
AORUS RGB Fusion with Digital LEDs





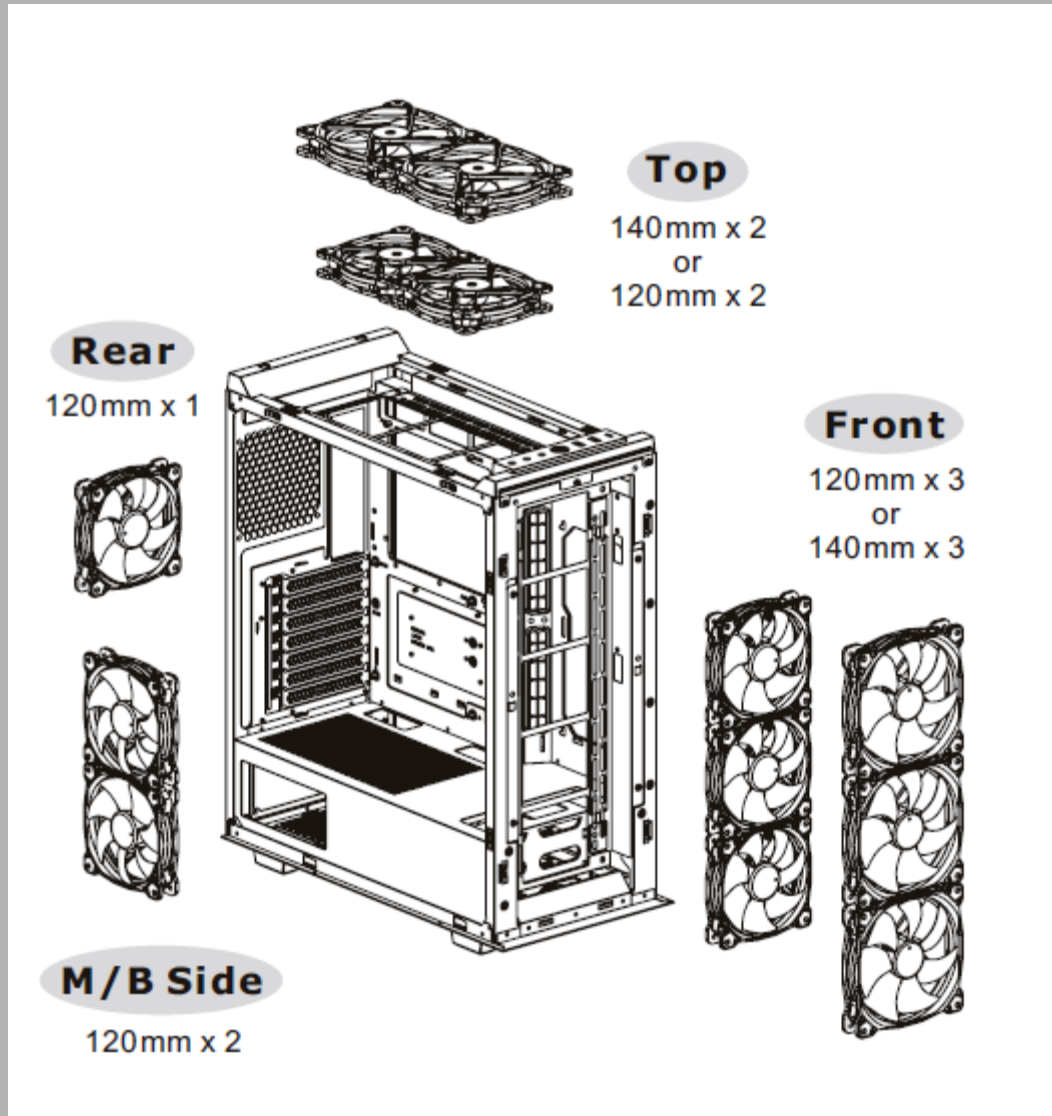
Thermaltake Divider 500 TG ARGB Mid Tower Chassis

Exploded View



Compatibility List

Fan Compatibility List			
	120mm	140mm	200mm
Front	3	3	-
Top	2	2	-
M/B Side	2	-	-
Rear	1	-	-



All-in-One Compatibility

All-in-One Compatibility List						
	120mm	240mm	360mm	140mm	280mm	420mm
Front	●	●	●	●	●	-
Top	●	●	-	●	●	-
M/B Side	●	●	-	-	-	-
Rear	●	-	-	-	-	-

